



la imagen corporativa de tu empresa



WEB

www.eliteuniformes.com

DIRECCIÓN

Ignacio Altamirano Esq. 5 de Mayo Colonia Centro C.P. 23000
La Paz, Baja California Sur, México.

TELÉFONOS

Tel (612) 125-88-31

Tel / Fax: 125-88-30

Cel.(612) 141-75-69

CORREO ELECTRÓNICOS

silverio@eliteuniformes.com / silveriobc@hotmail.com

Rothco's Mil-Spec Battle Dress Uniforms are great for public safety personnel looking for tough tactical uniforms. Heavyweight poly/cotton twill is perfect for cooler climates and the 100% cotton rip-stop poplin is great for warmer weather. Extra cargo pockets and reinforcements make them functional and durable. Available in Sizes: XS to 7XL regular, shorts, longs & extra longs. (Not all sizes available in all colors)



Button
Front
w/Flap
Closure

4 Large
Button
Down
Bellows
Pockets

Reinforced
Elbows

Adjustable
Waist
Tabs

2 Front
Slash
Pockets

2 Button
Down
Back
Pockets

Button
Fly

2 Cargo
Pockets

Reinforced
Seat &
Knees

Drawstring
Bottoms

**POLY/COTTON TWILL
B.D.U. PANTS**



BLACK

BLACK PANTS
7971 XS to XL 7974 2XL
7975 3XL 7776 4XL
7779 5XL 7781 6XL
7786 7XL
7971 SHORT LENGTHS, XS to XL
7972 LONG LENGTHS, S to XL
7778 2XL 7777 3XL



NAVY BLUE

NAVY BLUE PANTS
7885 XS to XL 7886 2XL
7895 3XL 7107 4XL
7108 5XL 7112 6XL
7885 SHORT LENGTHS,
XS to XL
7896 LONG LENGTHS, S to XL
7876 2XL
7109 EXTRA LONG
LENGTHS, L, XL



MIDNITE
BLUE

MIDNITE BLUE PANTS
7982 XS to XL 7984 3XL
7598 LONG LENGTHS, S to XL



KHAKI

KHAKI PANTS
7901 XS to XL 7904 3XL
7903 2XL 7933 5XL
7912 4XL 7934 6XL
7905 LONG LENGTHS, S to XL



OLIVE DRAB

OLIVE DRAB PANTS
7838 XS to XL 7858 2XL
7898 3XL 7833 4XL
7834 5XL
7899 LONG LENGTHS, S to XL



GREY

GREY PANTS
8810 XS to XL 8814 3XL
8811 2XL



BROWN

BROWN PANTS
8578 XS to XL 8589 3XL
8579 2XL



**100% COTTON RIP STOP
B.D.U. PANTS**



BLACK

BLACK PANTS
5923 XS to XL 5924 2XL
5925 3XL 5928 4XL
5821 LONG LENGTHS,
S to XL



NAVY BLUE

NAVY BLUE PANTS
5929 XS to XL 5930 2XL
8805 3XL
8806 LONG LENGTHS,
S to XL



KHAKI

KHAKI PANTS
5941 XS to XL 5848 3XL
5942 2XL 5849 LONG LENGTHS,
S to XL



OLIVE DRAB

OLIVE DRAB PANTS
5935 XS to XL 5936 2XL
5934 3XL
5937 LONG LENGTHS, S to XL

**POLY/COTTON TWILL
B.D.U. SHIRTS**

BLACK SHIRTS
7970 XS to XL
7973 2XL
7976 3XL
7775 4XL
7774 5XL

NAVY BLUE SHIRTS
8885 XS to XL
8886 2XL
8887 3XL
8897 4XL
8895 LONG LENGTHS,
S, M, L

MIDNITE BLUE SHIRTS
7952 XS to XL
7953 2XL

KHAKI SHIRTS
7900 XS to XL
7902 2XL

OLIVE DRAB SHIRTS
7837 XS to XL
7839 2XL
7832 3XL
7836 4XL

Available
only in
pants!

Available
only in
pants!

**100% COTTON RIP STOP
B.D.U. SHIRTS**

BLACK SHIRTS
5920 XS to XL
5921 2XL

NAVY BLUE SHIRTS
8803 XS to XL
8804 2XL

KHAKI SHIRTS
5854 XS to XL
5847 2XL

OLIVE DRAB SHIRTS
5852 XS to XL 5853 2XL

Rothco's Mil-Spec Uniforms are the perfect choice for law enforcement personnel. Our police style pant brings military utility to the law enforcement market. Our new tactical combat shirts offer comfort and protection when in the field.

P.S.T. - PUBLIC SAFETY TACTICAL PANT FEATURES:

- *H.W. Midnite Navy 9 oz 65% Poly/35% Cotton Fabric, Thick & Durable, Perfect for Cooler Climates*
- *Stain Resistant to Repel Body Fluids*

9861 REGULAR LENGTHS, 32" Inseam, Sizes: 30, 32, 34, 36, 38, 40, 42

9862 44, 46 **9863** 48, 50

9864 LONG LENGTHS, 34" Inseam, Sizes: 32, 34, 36, 38, 40, 42



ROTHCO TACTICAL COMBAT SHIRTS, made for comfort, worn for protection, perfect for tactical personnel in the field to wear under hot, heavy body armor and tactical vests, this combat shirt is made of a no melt, drip resistant fabric rated to withstand heat up 230°F, lightweight and breathable fabric wicks away moisture while keeping you dry, Sizes: S to 3XL



OLIVE DRAB
90015 S to XL
90016 2XL
90017 3XL

BLACK 90010 S to XL **90011** 2XL
90012 3XL **90013** 4XL

ROTHCO S.W.A.T. CLOTH 65% POLY/35% COTTON RIP-STOP FABRIC FEATURES:

- *The Cloth of Choice For Federal Agencies*
- *All Climate - Breathable In Summer, Wind Resistant In Winter*
- *Durable, Colorfast, Resists Fading, Tearing & Abrasions, Resists Wrinkling & Shrinking*

**STRATEGIC
DEPLOYMENT
UNIFORM**



5450 BLACK STRATEGIC DEPLOYMENT UNIFORM SHIRTS, 65/35 poly/cotton rip-stop, Sizes: XS to XL **5451** 2XL

5455 BLACK STRATEGIC DEPLOYMENT UNIFORM PANTS, 65/35 poly/cotton rip-stop, Sizes: XS to XL **5456** 2XL

Rothco's great selection of uniforms include our popular 65% poly/ 35% cotton S.W.A.T. cloth and our zipper fly pants in sizes up to 3XL. Our tactical shirts are available in both short & long sleeve and are excellent for both security and law enforcement personnel.



NAVY BLUE
(PANTS ONLY)
6306 XS TO XL
6307 2XL

ROTHCO
S.W.A.T. CLOTH
65% POLY/
35% COTTON
RIP-STOP
B.D.U.'S:
Same great
features as our
B.D.U.'s on page 2



BLACK
SHIRTS
6210 XS to XL
6211 2XL

BLACK
PANTS
6215 XS to XL
6216 2XL
6217 3XL
6218 LONG
LENGTHS,
S to XL



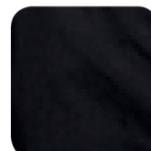
5775 ROTHCO
MIDNIGHT BLUE
ZIPPER FLY UNIFORM
PANTS, poly/cotton
twill, reinforced seat
& knees, adjustable
waist tabs,
Sizes: XS to XL
5776 2XL
5777 3XL
5778 LONG
LENGTHS, L, XL



30205 ROTHCO BLACK SHORT-SLEEVE
TACTICAL SHIRT, 2 pockets, epaulets,
65% poly/35% cotton twill, Sizes: S to XL
30206 2XL **30207** 3XL **30208** 4XL

6723 ROTHCO BLACK LONG-SLEEVE
TACTICAL SHIRT, 65% poly/35% cotton
twill, 2 pockets, epaulets, button cuffs,
Sizes: XS to XL

ROTHCO 2-POCKET TACTICAL BATTLE
DRESS UNIFORM SHIRTS, 65%
poly/35% cotton twill,
Sizes: S to 2XL



6350 BLACK,
S to XL
6351 2XL

Epaulets

Concealed
Buttons

Reinforced
Elbows

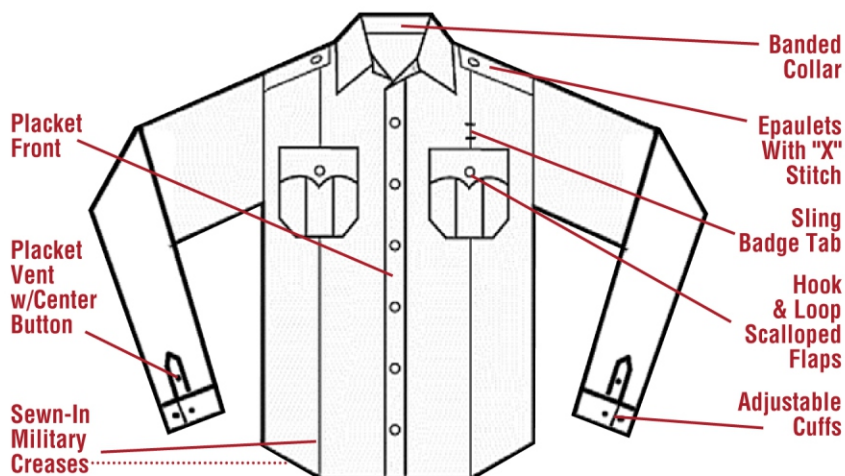
6110
NAVY BLUE,
S to XL
6111 2XL

3 Button
Cuffs

Tuck-In
Shirt Tail

Rothco offers a great choice of Uniform Shirts & Accessories. Our Uniform Shirts are available in 5 colors in both long & short sleeve and are especially popular with law enforcement, security and E.M.T. personnel. Make your uniform complete with our outstanding selection of caps, belts, ties and other great selling accessories.

ROTHCO POLICE & SECURITY UNIFORM SHIRTS, 65% polyester/ 35% combed cotton Poplin weave fabric, Sizes: S to 4XL



- NAVY BLUE**
30020 S TO XL
30021 2XL
30022 3XL
- GREY (SHORT-SLEEVE ONLY)**
30045 S to XL
30046 2XL
30047 3XL
- KHAKI (SHORT-SLEEVE ONLY)**
30035 S to XL
30036 2XL
30037 3XL

SHORT-SLEEVES

- LIGHT BLUE**
30025 S to XL
30026 2XL
30027 3XL
- WHITE**
30015 S to XL
30016 2XL
30017 3XL
30217 4XL

LONG-SLEEVES

- LIGHT BLUE**
30010 S to XL
30011 2XL
- WHITE**
30000 S to XL
30001 2XL

ROTHCO
See our full catalog or
www.rothco.com
for our complete
line of shirts
& accessories



4232 BONDED LEATHER 1 3/4" GARRISON BELT, value priced, Sizes : 30"- 46" **4237** 48"- 50"



POLICE ISSUE NECKTIES, 100% polyester, 18" or 20" long, breakaway design

- CLIP-ON NECKTIES**
30080 Navy Blue 18"
30082 Black 18"
30084 Black 20"
- HOOK & LOOP NECKTIES**
30081 Navy Blue 18"
30083 Black 18"
30085 Black 20"



BLACK

NAVY BLUE

6498 BLACK ELASTIC BLOUSING GARTERS, hook-on style, 2 per set



5661 8 PT. NAVY BLUE POLICE & SECURITY CAP, polyester outer shell, nylon lining, sweatband, Sizes: 6 7/8, 7, 7 1/4, 7 3/4, 7 1/2, 7 3/4

7198 STIRRUP STYLE BLACK SHIRT STAYS, 2 per pk, soft, stretch fabric, double clip attaches to shirt tail, loop slips over foot, metal adjusters, one size fits all



7196 BLACK MILITARY Y-TYPE SHIRT STAYS, 2 per pk, single clip attaches to sock, double clip attaches to shirt tail, elastic, metal adjusters

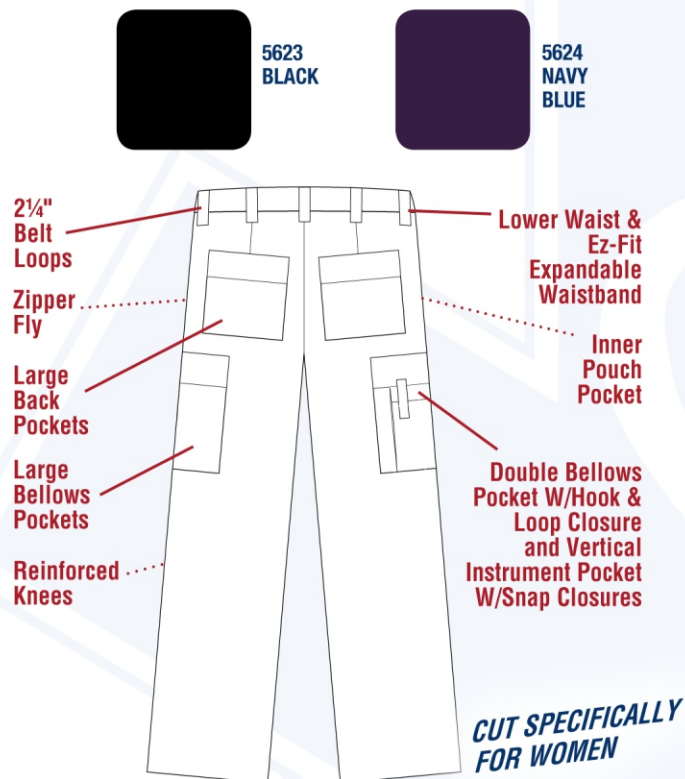
MILITARY STRAIGHT SHIRT STAYS, 4 per pk, single clip on each end, elastic, metal adjusters, Available in: **BLACK (7197)**, and **WHITE (7397)**



4 PER PACK

E.M.T. pants offer excellent value. They are pre-hemmed and ready-to-wear in short, regular & long lengths in sizes up to 5XL. Made of a rugged poly/cotton twill with or without a stain resistant coating to repel body fluids. Our exclusive women's pant offers a lower waist and expandable waistband for the perfect fit.

WOMEN'S E.M.T. PANTS, 65% Poly/35% Cotton, 7 pockets, 31" inseam, Sizes: 2, 4, 6, 8, 10, 12, 14, 16, 18, 20



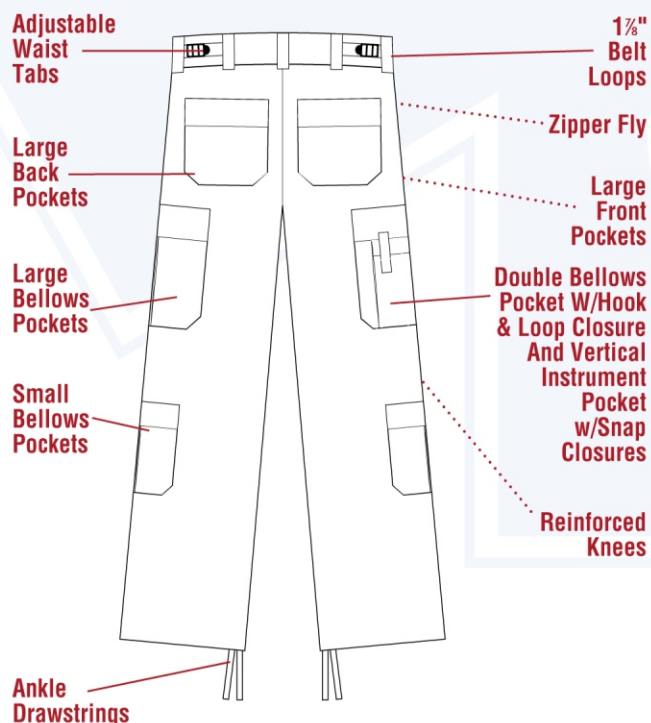
WOMENS
Size Chart

Size	2	4	6	8	10	12	14	16	18	20
Waist in inches	30 1/2	31 1/2	32 1/2	33 1/2	34 1/2	35 1/2	37	38 1/2	40	41 1/2
Hip in inches	38	39	40	41	42	43	44 1/2	46	47 1/2	51



MEN'S E.M.T. PANTS, 65% Poly/35% Cotton Twill or 65% Poly/35% Cotton Twill w/Stain Resistant coating, 9 pockets, Sizes: XS to 5XL Regular, Longs and Shorts

65/35 POLY/COTTON TWILL PANTS



BLACK
7823 XS to XL
7824 2XL 7818 3XL
8823 4XL 8819 5XL
7823 SHORT LENGTHS,
XS to XL
7828 LONG LENGTHS,
S to XL 7829 2XL



NAVY BLUE
7821 XS to XL
7822 2XL 7819 3XL
8824 4XL 8854 5XL
7821 SHORT LENGTHS,
XS to XL
7820 LONG LENGTHS,
S to XL



MIDNITE BLUE
7801 XS to XL
7802 2XL 7803 3XL
7804 4XL
7806 LONG LENGTHS,
S to XL

STAIN RESISTANT 65/35 POLY/COTTON TWILL PANTS



BLACK
9851 XS to XL
9852 2XL
9853 3XL
9855 LONG
LENGTHS,
9856 2XL



NAVY BLUE
9841 XS to XL
9842 2XL
9843 3XL
9845 LONG
LENGTHS,
S to XL

Rothco's popular E.M.T. shorts are great for warmer weather, and our selection of E.M.S. accessories are the popular choice for emergency responders.

Same GREAT features as our popular E.M.T. pants!



E.M.T. SHORTS, 65% poly/35% cotton, zipper fly, 7 pockets, slot pocket for scissors, flashlights, etc., w/snaps and hook & loop pockets, adjustable waist tabs, Sizes: XS to 2XL



78211 NAVY BLUE, XS to XL
78221 2XL

78231 BLACK, XS to XL
78241 2XL



10415 E.M.S. SEAT BELT CUTTER, hardened stainless steel blade, cuts easily through seat belts & other materials



3027 E.M.S. HOLSTER SET, complete tool set for E.M.T., includes holster, penlight, splinter forceps, bandage shears, and 7 1/4" Deluxe E.M.S. Shears. Shears also sold separately (10414)



3127 EMERGENCY RESPONSE HOLSTER SET, deluxe tool set for E.M.T.'s, includes stethoscope, window punch w/pocket clip, seat belt cutter, penlight, deluxe E.M.S. shears, 5 1/2" bandage shears, 5 1/2" straight Kelly forceps & 1000 Denier ballistic nylon holster w/glove pouch & 2 side pockets



3363 SMITH & WESSON FIRST RESPONSE ASSISTED OPENING KNIFE (SW911N), 3 1/2" 4034 stainless steel blade, nylon handle, seat belt cutter, spring loaded glass breaker, liner lock & safety lock, pocket clip



3096 SMITH & WESSON BORDER GUARD RESCUE KNIFE (SWBG2TS), 4.4" stainless steel combo edge tanto blade w/black coating, black coated aluminum handle, 10" overall, glass punch & seat belt cutter, pocket clip



10413 5 IN 1 E.M.S. LIFESAVER HAMMER, heavy duty plastic, includes window punch, seat belt cutter, airbag deflating needle, emergency light, whistle and mounting plate



10412 POLICE & E.M.S. WINDOW PUNCH, 5" long, lightweight, hardened steel point for proven punching power



Rothco's great selection of E.M.S. bags offer excellent value and sales potential.



MEDICAL RESCUE RESPONSE BAG, 1000 denier material, 3-section central compartment, zip-flap storage pocket & tool loops, 2 zippered side pouches, 2 front pouches & tool loops, top handle, adjustable shoulder strap, quick-release buckle & hook & loop closures, reflective Star of Life emblem, 15" x 9" x 7", Choice of: **ORANGE (2342)** or **NAVY BLUE (3342)**, (accessories not included)



2343 ORANGE E.M.S. RESCUE BAG, 1000 denier material, water resistant, 2 side pockets, 2 interior pockets w/section dividers for shears, instruments, etc., adjustable shoulder strap, Star of Life emblem, 6" x 6½" x 12½"

E.M.S. TRAUMA BAG, 1000 denier material, 5 large interior panels, mesh pockets, section dividers for large bandages, instruments, etc., oxygen bottle loops, opens flat for easy access, Star of Life emblem, 10" x 7" x 17", Choice of: **ORANGE (2344)** or **NAVY BLUE (3345)**, (accessories not included)



2443 NAVY BLUE E.M.T. MEDICAL FIELD KIT BAG, 1000 denier material, 3 zippered compartments, adjustable shoulder strap, quick release buckle, nylon lined, Star of Life emblem, 7" x 9" x 4"

2345 ORANGE E.M.S. TRAUMA BACKPACK, 900 denier material, large main zippered compartment, multiple interior pouches, mesh pockets and elastic loops for organizing tools & accessories, 3 outside mesh pockets, padded back and adjustable shoulder straps w/cell phone pouch, carry handle, 4 quick release cinch straps, reflective striping & Star of Life emblem, ID holder, 12" x 18½" x 7½" (accessories not included)



Cold weather tops are an important part of the public safety uniform. Rothco's sweaters are available in both acrylic & wool to suit your needs for both warmth and value.

G.I. STYLE ACRYLIC V-NECK SWEATERS,
reinforced shoulder & elbow patches, epaulets, Sizes: S to 5XL

Choice of:
BLACK,
NAVY BLUE
& OLIVE DRAB
6345 S to XL
6346 2XL
6365 3XL
6487 4XL
6489 5XL
(Black only)



GOV'T TYPE WOOL V-NECK SWEATERS,
100% wool, epaulets, patches on shoulders & elbows, badge tab, Sizes: 36 to 54

NAVY BLUE
6343 36-48
6353 50-52
6364 54

BLACK
6344 36-48
6354 50-52
6366 54



G.I. STYLE ACRYLIC COMMANDO SWEATERS, *reinforced shoulder & elbow patches, Sizes: S to 6XL, Available in: O.D., BLACK, NAVY BLUE, BROWN, or KHAKI*

BLACK



NAVY BLUE

OLIVE DRAB

BROWN

KHAKI

Choice of:
BLACK,
NAVY BLUE,
OLIVE DRAB
6347 S to XL
6357 2XL
6367 3XL
6488 4XL
6377 5XL
6378 6XL
6375 7XL
(Black Only)

BROWN
5415 S to XL
5416 2XL
5417 3XL

KHAKI
8346 S to XL
8347 2XL
8317 3XL

GOV'T TYPE WOOL COMMANDO SWEATERS,
100% wool, patches on shoulder & elbows, Sizes: 36 to 54

NAVY BLUE
6360 36-48
6361 50-52

OLIVE DRAB
6348 36-48
6358 50-52
6363 54



BLACK
6349 36-48
6359 50-52
6362 54



1580 POLICE DEPT OF DEFENSE PATCH



1507 GOLD SECURITY PATCH



1506 SILVER SECURITY PATCH



1531 E.M.T. 3" PATCH



1685 SECURITY GUARD PATCH



1686 SECURITY OFFICER PATCH

LAW ENFORCEMENT REFLECTIVE PATCHES, sew on, 3 1/2" x 12"



1921 SECURITY



1920 POLICE

Rothco's duty jackets are the perfect addition to any public safety uniform. We offer everything from great selling windbreakers to our all season jackets in sizes: S to 5XL.

LAW ENFORCEMENT COACHES JACKETS,
fleece-lined, imprintable,
nylon shell, elastic cuffs,
drawstring bottom,
2 front pockets, Sizes: S to 3XL

NAVY BLUE
7612 S to XL
7613 2XL
7614 3XL

BLACK
7640 S to XL
7641 2XL
7639 3XL

BLACK LAW ENFORCEMENT PRINTED COACHES JACKETS,
fleece-lined, nylon shell, elastic cuffs, drawstring
bottom, 2 front pockets, Sizes: S to 5XL



SECURITY
7648 S to XL
7636 3XL
7537 5XL

7649 2XL
7637 4XL

POLICE
7646 S to XL
7647 2XL
7638 3XL

7357 'SECURITY' MA-1 FLIGHT JACKET,
2-sided print, nylon,
reversible orange
lining, 2-way zipper,
Sizes: S to XL
7358 2XL
7359 3XL



SECURITY
FRONT CHEST



SECURITY
BACK



BACK

7609 BLACK "SECURITY" NYLON/POLAR FLEECE REVERSIBLE JACKET, 100% rip-stop nylon waterproof outer shell, polar fleece lining, 2 front zippered slash pockets, 2 inside zippered pockets, embroidered 'SECURITY' on left chest & across the back on black nylon side only, drawstring waist w/cord locks, elastic wrists, Sizes: S to XL
7610 2XL 7611 3XL 7617 4XL

7680 NAVY BLUE ALL SEASON TASLAN JACKET, rugged enough for working, sharp enough for duty, 100% nylon Taslan wind & water-resistant outer, polar fleece body lining, polyester fiberfill, quilted nylon sleeves, 2 zippered slash pockets, knit cuffs & waistband, zipper pulls, Sizes: S to XL
7681 2XL

8662 NAVY BLUE E.M.T. NYLON HOODED STORM JACKET, water resistant, fleece lining, zipper w/snap up storm flap, 2 front slash pockets, 1 inside zippered pocket, 1 inside pocket w/hook & loop flap closure, reflective piping across chest and back, reflective star of life imprint on left chest and back, elastic drawstring hood w/cord locks, hook & loop wrist closures, Sizes: S to XL 8663 2XL 8664 3XL

7324 BLACK ROTHCO MA-1 FLIGHT JACKETS, reversible orange lining, zippered utility pocket, 100% nylon outer shell, poly fiberfill lining, 4 front slash pockets, "extra full" cut, Sizes:

XS to XL **7334** 2XL
7344 3XL **7345** 4XL
7343 5XL **7346** 6XL
7349 7XL **7347** 8XL
73241 LONG LENGTHS, L, XL



7325 NAVY BLUE, Sizes: S to XL
7335 2XL
7365 3XL
7366 4XL
7368 5XL
7393 7XL



**SIZES:
XS TO 8XL**

7502 BLACK FLIGHTSUIT, poly/cotton, 2 way front zipper, 6 zippered pockets & leg zippers, hook & loop name tab fastener, adjustable waist & cuffs,

Sizes: S to XL **7504** 2XL
7514 3XL **7515** 4XL
7517 5XL **7513** 6XL



7503 NAVY BLUE, Sizes: S to XL
7506 2XL
7423 3XL
7519 4XL



7415 ORANGE, Sizes: S to XL
7416 2XL
7417 3XL



9964 BLACK E.C.W.C.S. GENERATION II HYVAT™ PARKA, concealed cobra hood double pull zipper, snap down storm flap, 4 pockets, ventilated sleeves, hook & loop cuffs, taped seams, Sizes: S to XL **9965** 2XL **9966** 3XL

HYVAT™ - SPECIAL 3 LAYER FABRIC PROVIDES WINDPROOF, WATERPROOF INSULATION & PROTECTION, ALLOWS VENTILATION & EVAPORATION, SPECIALLY TREATED BASE FABRIC FOR DURABLE WATER REPELLENCY

See our full catalog or visit www.Rothco.com for more flight wear.

GEN II

GEN II



9977 BLACK E.C.W.C.S. HYVAT™ TROUSERS, reinforced seat & knee, leg zipper w/ hook & loop cuffs, snap flap access pockets, zip fly, drawstring waist, taped seams, Sizes: S to XL **9978** 2XL

9980 BLACK E.C.W.C.S. GENERATION II POLAR FLEECE JACKET/LINER, extra warm, can be used as a jacket or a liner for the ECWCS parka, upper body and elbow patches, full front and under the arm zippers, 2 front slash zipper pockets, 2 inside mesh pockets, drawstring waistband, hook & loop sleeve adjustments, Sizes: S to XL **9981** 2XL **9982** 3XL **9983** 4XL

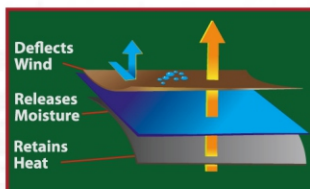
9771 MILITARY E.C.W.C.S. POLAR FLEECE TROUSER LINER, extra warm, drawstring waist, fly, cuff bottoms, Sizes: S to XL **9772** 2XL

With Rothco's new Special Ops soft shell jacket you get high end cutting edge technology at a fraction of the cost. Our hi-visibility jackets are the perfect choice for all public safety personnel.

ROTHCO SPECIAL OPS TACTICAL SOFT SHELL JACKET, durable, lightweight and breathable, 100% waterproof polyester shell, 3-layer construction deflects wind, wicks away moisture, and retains body heat, Sizes: S to 3XL, Available in: **BLACK, COYOTE BROWN & OLIVE DRAB**



9867 COYOTE BROWN, Sizes: S to XL
9868 2XL 9869 3XL



9745 OLIVE DRAB,
Sizes: S to XL
9746 2XL
9747 3XL

9767 BLACK,
Sizes: S to XL
9768 2XL
9769 3XL

8720 REVERSIBLE HI-VISIBILITY FORCED ENTRY YELLOW/BLACK UNIFORM JACKET, 320D Taslan nylon shell, breathable & waterproof, Sizes: S, M, L, XL **8721 2XL 8722 3XL**



8728 REVERSIBLE HI-VISIBILITY YELLOW/BLACK LIGHTWEIGHT UNIFORM JACKET, 100% nylon outer shell, lightweight fill, black reverses to Hi-Vis yellow w/reflective tape, snap-up front, self collar, 2 front pockets on black side only, elastic cuffs, drawstring bottom, Sizes: S to XL
8729 2XL 8730 3XL



Reverse Side

Our rainwear offers both durability & value and is specifically designed for law enforcement & security personnel

DELUXE REVERSIBLE REFLECTIVE RAIN PARKAS, H.W. 210 denier nylon/ polyester material, 2" reflective striping around chest, biceps and over shoulder on orange and safety green side ONLY, front zipper, storm/snap front flap, pass through pocket, underarm ventilation, badge tab, Sizes: S to 3XL

3889
ORANGE/BLACK,
S to XL
3890 2XL, 3XL

**BLACK
REVERSED**

**3900 SAFETY
GREEN/BLACK,**
S to XL
3901 2XL, 3XL



All items on this page
not for sale in California



3654 SAFETY GREEN REFLECTIVE RAIN JACKET, H.W. polyester/PVC material reflective striping on front, back and sleeves, snap up front and cuffs, snap on hood w/drawstring, 2 front slash pockets, Sizes: S to XL **3655** 2XL, 3XL

**3765 ROTHCO BLACK
MICROLITE RAINSUIT**, durable .20mm P.V.C. coated nylon, lightweight, abrasion resistant, Jacket features: zipper front w/snap storm flap, ventilated cape design, hook & loop wrist closures, dual entry pockets, drawstring hood, Pants features: elastic waist & side entry pockets, Sizes: S to XL **3766** 2XL, 3XL

*Also
Available
In Navy
Blue!*



**3716 HI-VISIBILITY REFLECTIVE POLICE
2-PC RAINSUIT**, side vents w/snaps for duty rig access, heavy duty black oxford nylon w/polyurethane coating, sealed-seams, 1½" reflective tape on sleeves and legs, badge tab & microphone holder, ventilated back, zipper front w/hook & loop storm flap, elastic waistband, Sizes: S to XL **3717** 2XL, 3XL



3682 VINYL PONCHOS, 50" x 80", heat-sealed, 10 mil. vinyl, w/snap closures, carrying pouch, Available in: **BLACK, ORANGE, NAVY BLUE OR NEON GREEN**

Rothco offers a huge selection of safety vests. Durability & functionality make our hi-visibility vests a popular choice for emergency responders and road crews.

EMS RESCUE VESTS, hi-visibility, durable Oxford polyester cloth, 2" grey reflective tape, 2 large zippered cargo pockets, breast pockets w/ID holder, nylon zipper, 3 adjusters on each side to fit all sizes, Available in: **ORANGE (9561)** or **BLUE (9521)**

9561

9521



9520 ORANGE MESH PUBLIC SAFETY VEST, hi-visibility durable Oxford polyester mesh cloth, 2" grey reflective tape, 2 large zippered cargo pockets, breast pockets w/flashlight holder, nylon zipper, 3 adjusters on each side to fit all sizes



9529 GREEN HI-VISIBILITY REFLECTIVE SAFETY VEST, 100g fluorescent polyester mesh, Hi-Vis EN471 1" reflective tape around waist and shoulders, black piping, hook and loop adjustable waist and front closure, one size fits most



9526 HI-VISIBILITY NEON GREEN OXFORD SAFETY VEST, grey reflective tape, elastic side bands, one size fits all



9529 ORANGE HI-VISIBILITY SAFETY VEST, super fine fluorescent polyester mesh fabric, Hi-Vis EN471 1" reflective tape around waist and shoulders, black piping, hook & loop adjustable waist & front closure, one size fits all

9525 HI-VISIBILITY ORANGE MESH WORKMANS SAFETY VEST, w/yellow reflective tape, hook & loop front, elastic side bands, one size fits all



6528 DELUXE "EASY 10" SAFETY VEST, blaze orange, super quiet texturized polyester material, hook & loop closure, one size fits all

696 2-CELL TRAFFIC WAND, waterproof, includes filters to change wand color to red, amber, green, blue or white, U.S. made





9518 HI-VISIBILITY BLUE SAFETY VEST, Hi-Vis EN471 1" reflective tape on both front & back, front hook & closure, elastic side bands, clear back ID holder (4½" x 12"), 1 inside pocket, 2 right chest pockets & 2 clear ID chest pockets w/hook & loop closure, one size fits all

PLAINCLOTHES CONCEALED CARRY VEST, cotton/poly, Sizes: S to 3XL, Available in: **BLACK** or **KHAKI**



8567 KHAKI, Sizes: S to XL
8568 2XL 8569 3XL

Right & Left Universal Handgun Padded Inside Concealment Pockets w/Hook & Loop Closures



VINYL SAFETY VESTS, full-cut, tie-front, perfect for construction workers or hunters, one size fits all, Available in: **ORANGE (6524)** or **NEON GREEN (6534)** (Not for sale in the state of California)



7457 BLACK 'SECURITY' RANGER VEST, poly/cotton, embroidered 'SECURITY' on left chest & back, 8 front hook & loop and zippered pockets, large back pouch with flap closure, shell loops, zippered collar w/hood, Sizes: S to XL **7458 2XL**, **7459 3XL 7449 4XL**



8567 BLACK, Sizes: S to XL
8568 2XL 8569 3XL

From Ultimate Tactical Vests to Basic Utility Vests, Rothco has everything you need for S.W.A.T. and public safety personnel.



6582 BLACK ULTIMATE TACTICAL VEST, 3 elastic M-16/7.62 mag pouches, 7 utility pockets, belt loops, drag handle, H.W. ballistic nylon, fully adjustable to all sizes



6594 BLACK QUICK DRAW TACTICAL VEST, poly/nylon mesh construction, universal pistol holster, 5 shotgun shell loops, 6 mag pouches, hidden cuff key pocket, inside pouches, padded load-bearing shoulder straps, padded right shoulder, hook & loop back ID panel attachment, 6 D-Rings, ALICE clip webbing on back, adjustable belt straps, one size fits all



BACK

*Also Available
In #6598 Army
Digital Camo*



6580 BLACK TACTICAL ASSAULT VEST, H.W. poly denier, adjustable padded shoulder straps, quick release buckles, 4 mag & 2 utility pockets, snap loops for hook-up to pistol belt, one size fits all

2283 BLACK TACTICAL HYDRATION ASSAULT VEST, the assault vest with everything, 8 ammo pouches, 3 large carry-all pouches, 2 vinyl-lined hydration pouches (bladder not included), mesh-lined for comfort, H.W. denier nylon, attachment straps, fully adjustable to all sizes

6491 BLACK CROSS DRAW TACTICAL VEST, H.W. polyester mesh construction, 3 ammo & 3 pistol magazine pouches, M.O.L.L.E. attachments on back, padded shoulders, holster (fits most medium frame pistols), 2 d-rings, 2 inside zip-up document pouches, adjustable pistol belt, front zipper, carry handle, hook & loop adjustable shoulder straps, drawstring waist, one size fits all



6484 BLACK RECON VEST, 100% nylon, water resistant, 10 pockets, zipper closure, epaulets, waist drawstring, Sizes: S to XL **6485 2XL** **6486 3XL**

Base layer & fire retardant clothing are an essential part of the public safety uniform. Our popular Firefighter/ E.M.S. shirt is available in Navy Blue in sizes up to 3XL.

BLACK E.C.W.C.S. GENERATION III SILKWEIGHT UNDERWEAR, level-1 of the E.C.W.C.S. system, highly breathable, moisture wicking, 4 oz. 100% polyester jersey knit fabric, anit-microbial & anti-odor protection, undershirt features: long back tail, thumbhole sleeves, bottom features: elastic waistband, access fly, Sizes: S to 3XL

FIRE RETARDANT UNDERWEAR, 7oz. acrylic viscose, no melt, no drip fabric, rated to withstand heat up to 400°F, Sizes: S to 3XL, available in tops & elastic waist bottoms, Colors: **BLACK** or **DESERT SAND**

9717 DESERT SAND FIRE RETARDANT LONG SLEEVE T-SHIRT, 60% cotton/40% acrylic, no melt, no drip fabric, rated to withstand heat up to 230°F, Sizes: S to XL
9718 2XL 9719 3XL

**MOISTURE
WICKING**

**64020
BLACK TOPS,**
Sizes: S to XL
**64021 2XL
64022 3XL**

BLACK TOPS
**61000 S to XL
61001 2XL
61002 3XL**

BLACK BOTTOMS
**61010 S to XL
61011 2XL
61012 3XL**

**DESERT SAND
TOPS**
**61003 S to XL
61004 2XL
61005 3XL**

**DESERT SAND
BOTTOMS**
**61013 S to XL
61014 2XL
61015 3XL**

**65020
BLACK
BOTTOMS,**
Sizes: S to XL
**65021 2XL
65022 3XL**

8748 NAVY BLUE FIREFIGHTER/ E.M.S. WORKSHIRT, heavyweight 100% cotton outer shell, fleece lining, zip up collar, large right chest pocket w/small inner pocket, elbow patches, knit waist and cuffs, key holder tab, Sizes: S, M, L, XL
**8749 2XL
8750 3XL**

9617 DESERT SAND FIRE RETARDANT T-SHIRT, 60% cotton/40% acrylic, no melt, no drip fabric, rated to withstand heat up to 230°F, Sizes: S to XL
**9618 2XL
9619 3XL**



Rothco's Public Safety Polo shirts offer a professional look at an amazing price. These shirts are available in Police, Security and E.M.T. in sizes up to 6XL. Our mock turtle-necks are great for layering in cooler weather.

LAW ENFORCEMENT PRINTED GOLF SHIRTS, 2-sided print, 100% cotton, 3 button front, full size cut, Sizes: S to 6XL, Available in: BLACK or WHITE



BACK

7698 BLACK POLICE,
Sizes: S to XL
7699 2XL, 3XL



7698 BLACK SECURITY,
Sizes: S to XL **7699** 2XL, 3XL
7798 4XL, 5XL
7789 6XL



7688 BLACK EMT,
Sizes: S to XL **7689** 2XL, 3XL

EMT
BACK



BACK

3216 BLACK MOISTURE WICKING 'SECURITY' GOLF SHIRT, 2-sided print, 100% polyester, wicks moisture away from body, 3 button front, full size cut, Sizes: S to XL **3217** 2XL
3218 3XL **3219** 4XL



SECURITY
BACK



7685 WHITE POLICE,
Sizes: S to XL
7686 2XL, 3XL

7694 WHITE SECURITY,
Sizes: S to XL
7695 2XL, 3XL
7794 4XL
7174 5XL

3406 BLACK MOCK TURTLENECK, 100% cotton, spandex collar to help keep its shape, excellent for law enforcement, Sizes: S to XL
3407 2XL
3408 3XL



3413 BLACK SECURITY MOCK TURTLENECK, 100% cotton, spandex collar to help keep its shape, white embroidered security on collar, Sizes: S to XL **3414** 2XL
3415 3XL **3416** 4XL

Rothco's best selling public safety category is our Raid T-Shirts - available in 9 styles in sizes up to 8XL. No uniform is complete without these official issue 2-sided tees. Our popular NYPD & FDNY officially licensed tees are also a great addition to your selection of law enforcement clothing.

OFFICIAL ISSUE DOUBLE-SIDED RAID T-SHIRTS, poly/cotton, Sizes: S to 8XL



6616 'SECURITY', Sizes: S to XL
6617 2XL **6611** 3XL **6604** 4XL
6684 5XL **66841** 6XL **66842** 7XL
66843 8XL



5716 WHITE 'SECURITY',
Sizes: S to XL
5717 2XL **5718** 3XL



6614 'SWAT', Sizes: S to XL
6615 2XL **6609** 3XL



60468 O.D. 'BORDER PATROL',
Sizes: S to XL **60469** 2XL
60470 3XL



6618 'SHERIFF', Sizes: S to XL
6619 2XL **66199** 3XL



6676 BLACK 'EMT',
SIZES: S to XL **66766** 2XL
66767 3XL



69365 NAVY BLUE FIRE DEPT.,
1-Sided, Sizes: S to XL **69366** 2XL
69367 3XL



6337 NAVY BLUE 'EMT',
Sizes: S to XL **6338** 2XL
6340 3XL



6612 'POLICE',
Sizes: S to XL
6613 2XL
6610 3XL
6608 4XL



60222 LONG SLEEVE 'SECURITY' 2-SIDED T-SHIRT,
Sizes: S to XL **60223** 2XL **60224** 3XL **60225** 4XL

OFFICIALLY LICENSED APPAREL

NEW!



6647 OFFICIALLY LICENSED NAVY BLUE FDNY T-SHIRT,
H.W. 100% cotton,
Sizes: S to XL **6648** 2XL



6650 GENUINE NYPD PHYSICAL TRAINING T-SHIRT,
H.W., cotton/poly, navy blue print,
Sizes: S to XL **6651** 2XL



6638 OFFICIALLY LICENSED NAVY BLUE NYPD T-SHIRT,
H.W. 100% cotton,
Sizes: S to XL **6639** 2XL



6656 GENUINE NYPD EMBROIDERED NAVY BLUE T-SHIRT, H.W., 100% cotton, 4 color embroidered NYPD emblem on chest, Sizes: S to XL
6657 2XL

Step into big profits with Rothco's great selling footwear. Our high performance Uniform Oxfords & Tactical Boots offer maximum comfort, support, durability and value, perfect for law enforcement & security personnel.

**GREAT
SELLER!**



5055 HI GLOSS NAVY OXFORDS, mirror finish easy care Poromeric uppers, oil resistant polyurethane outsole, Goodyear welt construction, lightweight, Sizes: 3 to 15 Regular, 6 to 15 wide, (includes half sizes up to 12½)

5085 SOFT SOLE MILITARY UNIFORM OXFORD, Leather upper, oil resistant polyurethane sole w/Goodyear welt construction, removable cushion insole, breathable cambrelle lining, popular & comfortable police issue shoe, Sizes: 5 to 15 Regular & 7 to 13 Wide (includes half sizes up to 11½)



5064 "FORCED ENTRY" BLACK 8" SECURITY BOOT, leather and denier nylon upper, leather collar, moisture-wicking lining, steel shank, slip-resistant sole, rust-proof hardware, Sizes: 5 to 15 (including ½ sizes up to 10½)

**EXCELLENT
VALUE!**



5054 "FORCED ENTRY" BLACK 6" SECURITY BOOT, leather and nylon upper, suede collar, steel shank, slip-resistant cup sole, rust-proof hardware, sturdy consumer packaging, Sizes: 5 to 15 (including ½ sizes up to 10½)



5368 "FORCED ENTRY" DESERT TAN 6" DEPLOYMENT BOOT, running shoe comfort in a military boot, suede leather upper w/breathable mesh, padded collar, steel shank, rustproof eyelets, mountaineer sole, Sizes: 3 to 13 regular, 5 to 12 wide, Full sizes only



5357 "FORCED ENTRY" DESERT TAN 8" SIDE ZIPPER DEPLOYMENT BOOT, running shoe comfort in a military boot, suede leather upper w/breathable mesh, side zipper, padded collar, steel shank, rustproof eyelets, Sizes: 3 to 13 regular, 5 to 12 wide, Full sizes only



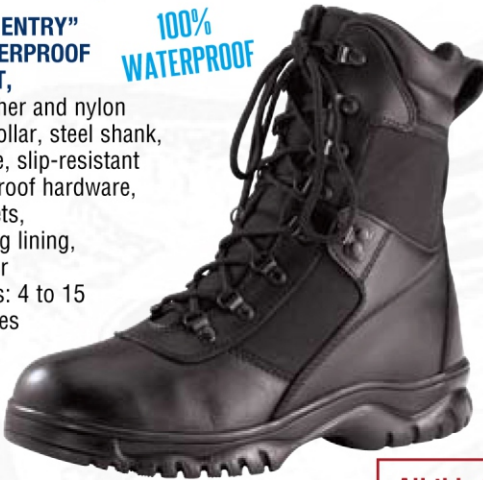
5184 6" BLOOD PATHOGEN TACTICAL BOOT, leather upper, polyurethane midsole, composite shank, slip resistant & air outsole design, waterproof and bloodborne pathogen membrane, vapor wicking lining, padded collar, removable insole, side zipper w/hook & loop zipper keeper tab, d-ring eyelets, ASTM F 1671 qualified, Sizes: 5 to 13 (including ½ sizes up to 10½)

Rothco's great selling tactical boots offer maximum comfort and durability at a fraction of the cost of other brands. Our boots are the perfect fit for all law enforcement & security personnel.

5052 "FORCED ENTRY" BLACK 8" WATERPROOF TACTICAL BOOT,

waterproof, leather and nylon upper, leather collar, steel shank, gusseted tongue, slip-resistant cup sole, rust-proof hardware, speed lace eyelets, moisture-wicking lining, sturdy consumer packaging, Sizes: 4 to 15 (including ½ sizes up to 10½)

**100%
WATERPROOF**



**GREAT
SELLER!**

5053 "FORCED ENTRY" BLACK 8" TACTICAL BOOT W/SIDE ZIPPER,

leather and nylon upper, leather collar, steel shank, gusseted tongue, slip resistant sole, speed lace eyelets, rust proof hardware, moisture wicking lining, sturdy consumer packaging, Sizes: 5 to 15 (including ½ sizes up to 10½)

ZIPPER



All this footwear is **ISO 9001:2000 CERTIFIED**



ZIPPER

**MEETS ASTM
F2413-05
STANDARDS**



COMPOSITE TOE

**ASK ABOUT
ROTHCO'S
SHOE SHELVES**



**NEW
LIGHTWEIGHT
COMPOSITE
TOE**

5358 "FORCED ENTRY" BLACK 8" SIDE ZIPPER DEPLOYMENT BOOT, leather and nylon upper, side zipper, padded leather collar, moisture wicking liner, steel shank, slip/oil resistant outsole, rustproof eyelets, Sizes: 3 to 13 Regular, 5 to 12 Wide, Full sizes only

5063 "FORCED ENTRY" 8" SIDE ZIPPER COMPOSITE TOE TACTICAL BOOT, security-friendly, non-conductive for safety and warmth, completely non-metallic, strong-as-steel composite toe & shank, leather and nylon upper, gusseted tongue, slip-resistant sole, speed lace eyelets, moisture-wicking lining, Sizes: 5 to 15 (including ½ sizes up to 10½)



**7187
BLACK
MILITARY/
PUBLIC
SAFETY
CONTOURED
INSOLES,**

polyurethane bottom, cloth top, contoured for arch support, Sizes: 3-5, 6-7, 8-9, 10-11, 12-13, 14-15

6153 CHUKKA COOLMAX BOOT SOCK, 70% cotton, 20% Coolmax, 10% nylon, U.S. made, Sizes: M, L



6143 BLACK MILITARY DRESS SOCKS, 80% cotton/20% nylon, soft & comfortable, to be worn with oxfords & other dress shoes, Size: Large (10 to 13) only, U.S. made



6144 BLACK POLYPROPYLENE SOCK LINER, keeps feet warm & dry, one size fits all, U.S. made

**GSA
COMPLIANT**



Rothco offers a large selection of leather and synthetic protective gloves perfect for police, E.M.T. and tactical personnel. Our gloves offer maximum comfort, durability, flexibility and superior fit at incredible values. Available in Sizes S to 2XL.



3466 ROTHCO STREET SHIELD POLICE GLOVES, cut resistant inner lining, durable synthetic leather palm w/maxi-grip non-skid cradle, synthetic rubber & Spandex back, hook & loop closure



3496 ROTHCO STREET SHIELD FIRE & CUT RESISTANT POLICE GLOVES, goatskin leather, fire & cut resistant knit lining & back, hook & loop wrist closure



4436 ROTHCO COLD WEATHER STREET SHIELD GLOVES W/CUT RESISTANT LINING, cut resistant fingers & palm, synthetic leather palm, synthetic & nylon spandex back, ThermoBlock™ insulation for warmth, elastic cuff w/hook & loop closure



3467 ROTHCO ULTRA THIN CUT RESISTANT POLICE GLOVES, ultra-thin cowhide leather for maximum feel & comfort, elastic wrist



3483 ROTHCO DELUXE CUT RESISTANT TACTICAL GLOVES, cut & flame resistant lining, leather accents on knuckles and fingers, multi-layer goatskin palm for added protection, elastic cuff w/hook & loop closure, wrist pull tabs



3452 ROTHCO CUT RESISTANT LINED POLICE GLOVES, cut resistant lining sewn into a leather outer, elastic wrist



3434 ROTHCO DELUXE LEATHER CUT RESISTANT POLICE GLOVES W/TRICOT LINING, genuine cowhide leather shell, soft polyester tricot lining, rolled fingers, elastic wrist w/hook & loop closure



3450 ROTHCO POLICE DUTY SEARCH GLOVES, ultra thin cowhide for excellent feel with great hand protection, elastic wrist



4472 ROTHCO COLD WEATHER LEATHER POLICE DRESS GLOVES, genuine cowhide leather outer shell, soft polyester tricot lining, ThermoBlock™ insulation for warmth, elastic wrist

Rothco offers a large selection of leather and synthetic protective gloves perfect for police, E.M.T. and tactical personnel. Our gloves offer maximum comfort, durability, flexibility and superior fit at incredible values. Available in Sizes S to 2XL. (3455 available in XS)



ThermoBlock™
INSULATION

**EXCELLENT
VALUE**

3455 ROTHCO ULTRA THIN SYNTHETIC RUBBER GLOVES, ultra thin for maximum feel, nylon lining, synthetic leather palms, elastic cuff, hook & loop wrist closure, provides ultimate weather protection

3558 ROTHCO INSULATED SYNTHETIC RUBBER GLOVES, synthetic leather palm, elastic cuff, tricot lining, fluid proof/waterproof membrane, ThermoBlock™ insulation for warmth, hook & loop wrist closure



3460 ROTHCO FINGERLESS SYNTHETIC RUBBER GLOVES, ultra thin for maximum feel, synthetic leather palms, elastic cuff, hook & loop wrist closure

ROTHCO TACTICAL RAPPELLING GLOVES, reinforced suede palms for rappel protection, foam padded back and knuckles for debris and combat, available with full fingers (3451) or fingerless (3454)



3451



3454



*Also
Available
In O.D.
or Khaki*

3461 ROTHCO SPECIAL FORCES TACTICAL GLOVES, shell provides cut resistance & heat protection to 800° F, non-skid superior grip construction, water resistant dual-layer leather palms, elasticized wrist, foam padded back



ThermoBlock™
INSULATION

4480 ROTHCO COLD WEATHER SHOOTING GLOVES, soft cowhide leather, breathable & waterproof membrane, ThermoBlock™ insulation for warmth, spandex inserts at knuckles for flexibility, hook & loop wrist closures



3463 ROTHCO CUT RESISTANT HARD KNUCKLE TACTICAL GLOVES, molded knuckles with water repellent leather cover, water repellent leather palm, fingers and thumb, hook & loop wrist closure

*Also Available
In Coyote or
Foliage Green*

From parade gloves to hi-visibility gloves, Rothco has it all. Our gloves offer maximum comfort & protection, perfect for all Public Safety personnel. Available in Sizes XS to 2XL.

3481 ULTRA-LIGHT HIGH PERFORMANCE GLOVES, ultra thin for excellent feel & comfort, synthetic leather palm, spandex backing, elastic cuff w/hook & loop closure, Sizes: S to 2XL



**GREAT
FOR ALL
HANDS-ON
ACTIVITIES!**

3482 SWAT/FAST ROPE LEATHER RESCUE GLOVES, soft, durable cowhide leather, reinforced goatskin leather palm and thumb cradle for added protection against rope burns, elastic wrist, Sizes: S to 2XL



**Great for
Cold
Weather!**

ThermoBlock™
INSULATION

5487 HI-VISIBILITY SAFETY GREEN GLOVES W/REFLECTIVE TAPE, 100% H.W. nylon shell, 100% polyester lining w/waterproof membrane, ThermoBlock™ insulation for warmth, rubber coated fingers for improved dexterity, reflective tape on palm, knuckles & index finger, great for public safety personnel, Sizes: S to XL

4410 WHITE PARADE GLOVES, 100% cotton w/snap, Sizes: XS to 2XL



(Not for sale in CA.)

4411 WHITE PARADE GLOVES W/GRIPPER DOTS, 100% cotton, snap closure (except size XS), rubberized dots on palm & fingers for maximum grip, Sizes: XS to XL



4395 BLACK FLEECE SNIPER FINGERLESS GLOVES/MITTENS, breathable polyester fleece shell, fingerless glove w/retractable mitten top, mitten top secures to top of glove w/hook & loop back, cloth palm and thumb patches, elastic wrist w/locking cinch cord, Sizes: S to 2XL



ThermoBlock™
INSULATION

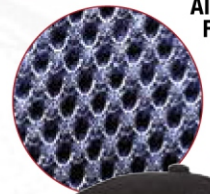
4493 NYLON INSULATED SNIPER GLOVES, windproof nylon shell, ThermoBlock™ insulation for warmth, synthetic leather palm & thumb, soft polyester tricot lining, elastic wrist with cord lock drawstring, Sizes: S to XL



4895 BLACK FLEECE FINGERLESS GLOVES, breathable polyester fleece, windproof cloth palm & thumb patches, elastic wrist w/locking drawstring, pull tabs, Sizes: S to 2XL

Rothco's low profile caps offer tremendous value in a cool & comfortable 100% brushed cotton twill fabric. Special case pricing is available.

SUPREME LOW PROFILE LAW ENFORCEMENT EMBROIDERED INSIGNIA CAPS, comfortable brushed cotton twill, padded sweatband, T-sliding adjustable metal buckle



NEW COOL AIR MESH FABRIC

NEW!



9275 SECURITY MESH LOW PROFILE INSIGNIA CAP, 100% poly mesh material, silver embroidered 'SECURITY', eyelets, hook & loop closure

OFFICIAL NYPD LICENSED CAPS



8272 GENUINE NYPD SHIELD CAP, navy blue cap, 100% cotton, 4 color embroidered logo



8270 GENUINE NYPD CAP, navy blue, 100% cotton, white embroidered logo on front & side

DELUXE LOW PROFILE LAW ENFORCEMENT INSIGNIA CAPS, comfortable 100% brushed cotton twill, raised 3-D embroidered insignia on front panel & brim, sandwich bill & back strap insignia, adjustable hook & loop closure



EMBROIDERED WATCH CAPS, 100% acrylic



DELUXE 3-D EMBROIDERED WATCH CAPS, 100% acrylic



From operator caps to level IIIA ballistic helmets, Rothco has a complete selection of headwear for S.W.A.T. and tactical teams.

**2" X 3" HOOK BACK PATCHES
SOLD SEPARATELY**

17781 SILVER/BLACK FLAG PATCH



**17782
KHAKI/BLACK**

**17783
O.D./BLACK**

9362 ROTHCO SPECIAL FORCES OPERATOR CAP, baseball style, poly/cotton, 6 vent holes, 3½" x 2" hook & loop front for flag or unit patch, 1⅞" x 1" hook & loop on top for infrared marker, adjustable back strap w/plastic buckle, one size fits all, Available in: **BLACK**, **KHAKI** or **OLIVE DRAB**



BLACK



KHAKI



OLIVE DRAB



1991 ANTI-RIOT TACTICAL HELMET, provides full head protection against projectiles, tough high impact ABS black plastic, impact resistant polycarbonate face shield, adjustable interior webbing to fit all sizes*



1994 G.I. STYLE ABS PLASTIC HELMET, styled after the U.S. PASGT helmet, adjustable chin strap, cushioned liner, individually boxed, Sizes: S/M, L/XL, Choice of: **BLACK** or **O.D.**

Export & local restrictions may apply.
Please contact Rothco for details.



*Also
Available
in O.D.*

1995 G.I. TYPE BLACK ABS PLASTIC MICH-2000 TACTICAL HELMET, adjustable nylon chin strap w/plastic buckles, 7 removable & adjustable cushioned pads for maximum comfort, hook and loop strips for pad attachment, great for costumes, parades, airsoft, reenactments etc., one size: fits 6¾ to 7¾



ROTHCO BLACK TACTICAL PASGT TYPE BALLISTIC HELMET, protects against fragmentation & shrapnel, made of Aramid ballistic fabric, high compression foam impact pad (10-12mm thick), adjustable headband, chin strap, conforms to U.S. Military Specs MIL-H44099A, Choice of: Level II (**1990**) (special orders ONLY, min 40 pc) or Level IIIA (**2990**) Sizes: M, L*



1965 G.I. TYPE BLACK TACTICAL HELMET COVER, fits U.S. PASGT helmets, poly/cotton



5510 BLACK POLYPROPYLENE BALACLAVA, fleece-lined, one size fits all



11055 BLACK FIRE RETARDANT SWAT HOOD, 8 oz., heat and flame retardant, good for cooler weather, 15" length, one size fits all



9850 BLACK TROOPER HAT, 100% vinyl, synthetic wool fur, fold down ear flaps, triple snap chin strap, snap up front flap, Sizes: 7, 7¼, 7½, 7¾

From police anti-riot shields to basic protective gear, Rothco has a complete selection of equipment for SWAT & tactical teams.



1992 POLICE ANTI-RIOT SHIELD, tough polycarbonate shield for full torso protection, aluminum handle, web arm strap, 40" x 20" x 1/2" thick, weighs just 6lbs

10340 UVEX TAC-1 TACTICAL GOGGLE, shatter resistant dual pane replaceable anti-fog lens, vented black frame, black rim, wide elastic black headband

uvex



10379 BLACK WINDSTORM TACTICAL GOGGLE, foam padded frame, anti-fog, anti-scratch, clear lens, UV 400 protection, 1 1/2" adjustable strap, individually boxed



11379 SPORTEC TACTICAL GOGGLES, anti-fog, anti-scratch, smoke grey polycarbonate lens, 1" wide elastic strap, UV 400 protection, micro-fiber storage and cleaning pouch, individually boxed



10609 SMITH & WESSON CALIBER SUNGLASSES, anti-fog, scratch resistant, smoke polycarbonate lenses, wrap around protection, ergonomic rubber nose pad & contoured rubber temples for maximum comfort, meets ANSI Z87.1+ safety standards, CSA Z94.3 compliant, polybagged



GREAT SELLER!



Smith & Wesson

10607 SMITH & WESSON 'EQUALIZER' ANTI-FOG SUNGLASSES, gunmetal grey color frame w/wrap around anti-fog smoke lenses, sport grip temples, rubber nose pad for comfort, high impact polycarbonate lenses, exceeds ANSI Z87.1 safety standards, 99.9% UV protection, microfiber cleaning & carry pouch

10624 SMITH & WESSON 38 SPECIAL SAFETY EYEWEAR, black frames w/smoke lens, lightweight & durable, contoured temples with pressure pads for a secure fit, black color frames with impact/shatter-resistant polycarbonate lenses, 99.9% UV protection, ideal for shooting & hunting, exceeds ANSI Z87.1+ safety standards



NEW!

10051 GARRETT SUPER SCANNER V METAL DETECTOR, Originally designed for the Olympic Games, extremely sensitive, detects guns, knives, razor blades, box cutters, foil wrapped drugs and even the smallest of objects, features audible or silent vibrating alarm, LED indicators for power, alarm and battery, rugged high-impact ABS case with reinforced coil compartment, single 9V battery (included) provides up to 100 hours of use, U.S. made, 3 1/4" x 1 3/4" x 16 1/2"



10040 HAND-HELD METAL DETECTOR,

detects all metals, adjustable sensitivity, locates metal hidden in luggage, mail, parcels, uses 9V battery (not included), weighs just 1/2 lb.

Export & local restrictions may apply. Please contact Rothco for details.

From rappelling to basic protective gear, Rothco has a complete selection of equipment for SWAT & tactical teams.

ROTHCO HARD SHELL CROWD CONTROL GEAR



3568 NEOPRENE SHIN GUARDS

ROTHCO NEOPRENE TACTICAL PROTECTIVE GEAR, features: shock absorbing, memory foam padding, a second layer of polyurethane foam, a durable nylon laminate neoprene outer layer, hook & loop fasteners, extremely flexible, ergonomic, one size fits all, excellent for law enforcement & specialists everywhere



3567 NEOPRENE KNEE PADS



3566 NEOPRENE ELBOW PADS

ROTHCO BLACK TACTICAL PROTECTIVE PADS, 900 Denier polyester, over 1/2" foam padding, rubber non-slip caps, dual hook & loop secure fastening system, 1 size fits all

EXCELLENT VALUE!



11057 ELBOW PADS



11058 KNEE PADS



3903 ROTHCO HARD SHELL KNEE/SHIN GUARDS

mesh covered padded foam, felt-like lining, hard polycarbonate shell protects shin, knee, ankle & foot, adjustable & removable foot plate, fold out ankle protectors, triple hook & loop secure fastening system, nylon gear bag, Sizes: M, L



3904 ROTHCO HARD SHELL FOREARM GUARDS

mesh covered padded foam, hard polycarbonate shell protects elbows & forearms, triple hook & loop secure fastening system, nylon gear bag



375 RESCUE FIGURE 8 RING, same features as #275 w/ears to prevent rope lock-up



275 FIGURE 8 RING, #1 forged aluminum ring for descending or belaying, 5 1/2" x 3", 8000 lb test



277 BLACK D CARABINER, 105mm, high strength aluminum alloy 4 1/4" size, 5500 lb test, black anodized finish



276 BLACK LOCKING D CARABINER, 105mm, same as # 277 with frame lock screw mechanism



278 ADJUSTABLE GUIDE HARNESS, a versatile, lightweight, fully adjustable harness for rappelling & mountaineering, features 4,000 lb. test webbing, 2" aircraft aluminum buckles, a truly functional harness at an exceptional value



S.W.A.T./RANGER RAPPELLING ROPE, top quality static rope, 100% polyester reduces stretch, increases strength, UV resistance & durability, polysheath for resistance to abrasion, pre-shrunk to reduce shrinkage, ideal for wet uses, meets or exceeds UIAA and NFPA standards, 7/16" diameter, 9,000 lb test, U.S. made, choice of 150' (**279**) or 200' (**272**)

No public safety personnel should be without a flashlight. Our top selling Maglite brand is the popular choice for law enforcement & our LED flashlights are used by professionals world wide. See our full catalog or www.Rothco.com for our full line of flashlights.



883 ROTHCO BLACK 28 BULB LED FLASHLIGHT, aluminum, 5½" high, blister packed, uses: 3 AAA batteries (not included)

884 ROTHCO BLACK 19 BULB LED FLASHLIGHT, aluminum, 5¼" high, wrist strap, blister packed, uses: 3 AAA batteries (not included)



885 ROTHCO BLACK 12 BULB LED FLASHLIGHT, aluminum, 4¼" high, wrist strap, blister packed, uses: 3 AAA batteries (not included)



880 ROTHCO GREY 8 BULB LED FLASHLIGHT W/LASER POINTER, red laser beam, gun metal grey aluminum body, 4½" high, rubber grip, wrist strap, blister packed, uses: 3 AAA batteries (not included)



MAG-LITE®



768 AA BLACK MAGLITE® HOLSTER COMBO PACK, Pouch & 2 Duracell® batteries included



813 MAGLITE® 3-D CELL LED FLASHLIGHT, machined aluminum, water & shock resistant, bright 3w bulb, rotating head for focusing, uses 3 D batteries (not included)



778 MAGLITE® D-CELL LEATHER BELT HOLDER

Smith & Wesson®



7150 SMITH & WESSON GALAXY ELITE 100 LUMEN CREE LED FLASHLIGHT, 75x brighter than single LEDs, LED bulbs never need replacing, water & moisture resistance, anodized for superior corrosion resistance & durability, shatter & scratch resistant polycarbonate lens, 5½" long, up to 2 hours of continuous battery life, includes pocket clip, holster, lanyard & 2 AA batteries, limited lifetime warranty



7152 SMITH & WESSON GALAXY 12-BULB LED FLASHLIGHT, 12 bulbs; 6 white for anytime use, 2 red, 2 blue & 2 green for night vision and signaling in emergency situations, visible for over 1 mile, LED bulbs never need replacing, anodized aluminum for superior corrosion resistance & durability, 6½" long, includes holster & 3 AAA batteries, limited lifetime warranty



7153 SMITH & WESSON GALAXY 9-BULB LED FLASHLIGHT, this ultra bright light offers the latest combination of compact size, power and durability, waterproof and corrosion proof, LED bulbs never need replacing, visible for over 1 mile, up to 60 hours of continuous battery life, 4" long, compact size for pocket, purse, backpack etc., includes 3 AAA batteries, limited lifetime warranty

D-CELL MAGLITE® FLASHLIGHTS, machined aircraft aluminum, high-intensity spot to flood beam, water and shock resistant, spare bulb.

Available in: **775 2D** **783 3D** **772 4D** **786 6D**



STREAMLIGHT



737 SCORPION LITHIUM POWERED FLASHLIGHT,

brightest & smallest flashlight ever, 6,500 candle power Xenon lamp, only 4.9" long, tail cap switch, spot-to-flood focus, 2 lithium batteries with 10 year shelf life, rubber coated aluminum body, U.S. made



Handcuffs are essential for all law enforcement and security personnel. Rothco offers over 16 styles of handcuffs from our value to premium line including Smith & Wesson®.



10588 DELUXE STAINLESS STEEL HANDCUFFS, double lock*



DELUXE HINGED HANDCUFFS, double lock, w/case, Choice of: **BLACK (30092)** or **NICKEL PLATED STEEL (30093)***



20574 ROTHCO DELUXE MOLDED HANDCUFF CASE, H.W. denier ballistic material, hook & loop closure, fits 2 1/4" belts



10098 ROTHCO POLICE ISSUE NICKEL HANDCUFFS, heavy gauge satin nickel plated steel, double lock*



10887 PINK HANDCUFFS, double lock, w/case*



PROFESSIONAL DETECTIVE HANDCUFFS, double lock, Choice of: **CHROME-PLATED (10091)** or **BLACK (10092)***



10603 THUMB CUFFS, nickel-plated, single and double lock features, w/pouch*



10574 ROTHCO POLICE HANDCUFF CASE, holds standard or link cuffs



Smith & Wesson®



SMITH & WESSON® STEEL HANDCUFFS, police issue, double lock, U.S. made, Choice of **NICKEL (#100) (10088)** or **BLACK (M100) (10097)***



10087 SMITH & WESSON PINK STEEL HANDCUFFS, nickel finish, pink weathershield coating for easy visibility, double lock, U.S. made*

Also available in yellow or red



10089 SMITH & WESSON® HINGED HANDCUFFS, (#300) double lock, nickel finish, U.S. made*



10095 SMITH & WESSON NICKEL HANDCUFFS W/PUSH PIN LOCK (M100P), police issue, double lock, nickel finish, U.S. made*



10081 DELUXE LEATHER HANDCUFF CASE, heavyweight



10191 UNIVERSAL HANDCUFF KEY W/CLIP, 4" long, fits most standard double lock handcuffs, blister carded



10090 UNIVERSAL HANDCUFF KEY, fits standard double lock handcuffs



10094 STANDARD HANDCUFF KEY

*Export & local restrictions may apply. Please contact Rothco for details.

Batons & self defense sprays are essential for all law enforcement and security personnel. Rothco offers over 15 styles of batons from our value to premium lines including Smith & Wesson®.

SABRE

SABRE RED LAW ENFORCEMENT UNITS, 10% OC for maximum incapacitation, 4x hotter than other brands, Taser compatible, Available in: Large 3.3 oz. duty belt canister (20009) or Small 1.8 oz. duty belt canister (20008) U.S. Made*



20009

MAKING GROWN MEN CRY SINCE 1975



20008

SABRE RED CROSSFIRE LE LAW ENFORCEMENT DEFENSE SPRAY, 10% OC for maximum incapacitation, deploys continuously from any position, EID compatible, shoots 12-15', available in: Small 1.8oz. canister, (20010) or Large 3oz. canister, (20011), U.S. made*



20010



20011

10006 SUPER RED PEPPER POLICE MAGNUM DEFENSE SPRAY, maximum strength with ultra-violet marking dye, 4 oz., U.S. Made*



10002 SABRE ADVANCED 3-IN-1 POLICE MAGNUM DEFENSE SPRAY, contains red pepper, CS tear gas & ultra violet marking dye, 4 oz., U.S. Made*



NEW! **3375 SMITH & WESSON 21" STEEL EXPANDABLE BATON W/HOLSTER (SWBAT21H)**, 4130 seamless alloy steel tubing, thermoplastic polyester elastomer handle, 1680 denier holster w/snap closure belt loops*



Smith & Wesson®

STEEL EXPANDABLE BATONS W/SHEATH, steel shaft, foam grip, collapsible, friction lock, nylon sheath*, Available in: **BLACK 16" (10030), 21" (10078), 26" (10031), 31" (10131) or CHROME 21" (10032)**



GREAT SELLER!



10541 BATON HOLDER, for standard & side handle batons



10069 21" EXPANDABLE STEEL BATON W/POLY TIP, steel shaft, thermoplastic polyurethane tip, rubber handle, collapsible, friction lock, nylon sheath with w/D-ring*



11031 22" NYLON LIGHTWEIGHT EXPANDABLE BATON W/SHEATH, nylon fiber coating, rubber handle, metal tip, nylon belt sheath w/hook & loop closure and D-ring, 9" closed



10070 MILITARY BATON, 24" long, wood*

10071 MILITARY BATON HOLDER, leather & steel, attaches to belt. (Sold separately)



10151 ROTHCO NYLON BATON W/SIDE HANDLE, 24" long, 1 1/4" diameter, lightweight, nylon fiberglass, rubber grip handle, one piece*



10150 ROTHCO NYLON POLICE BATON, 24" long, 1 1/4" diameter, lightweight nylon fiberglass, rubber grip handle*



10075 MILITARY POLICE NIGHT STICK, 22" long, w/thong, wood, U.S. made*

*Export & local restrictions may apply. Please contact Rothco for details.

9997 EXPANDABLE BATON L.E.D. LIGHT, attaches to end of expandable baton, 3 ultra bright L.E.D. bulbs, aluminum body, batteries included



Look the part, feel the part! No public safety personnel should be without Rothco's great selling badges, holders & patches.

GOLD BADGES, Pin Back



NICKEL PLATED BADGES, Pin Back



DELUXE SECURITY ENFORCEMENT OFFICER BADGE, pin back, plated zinc



DELUXE 'SPECIAL POLICE' BADGES, pin back, plated zinc, 3 1/8" x 2 1/4"



SECURITY OFFICER BADGE, pin back, plated zinc



1135 NYPD STYLE LEATHER BADGE HOLDER W/CLIP, pin holes & cutout for NYPD style badge, 2" x 2 1/2" cutout, hook & loop closure, 32" neck chain, interior pocket for chain storage, steel clip



1133 LEATHER CLIP ON BADGE HOLDER W/SWIVEL SNAP CLOSURE, steel clip, swivels for easy badge attachment, fits standard shield badges, 3 5/8" X 2 5/8"



1131 CLIP-ON LEATHER BADGE HOLDER, w/ tempered steel clip, U.S. made, (#8384 chain sold separately)



1139 LEATHER NECK ID/ BADGE HOLDER W/CHAIN, leather, bi-fold w/hook & loop closure, clear window for ID on one side, badge cutout on the other, fits 2 1/2" x 3 1/2" badge, small inside pocket, can also be worn on belt, 33" chain included



1129 LEATHER POLICE I.D./BADGE HOLDER, badge flap can be hooked over pocket or belt, clear front window, snap closure

Rothco has a great selection of whistles for all applications. Our earmuffs & gun cleaning kits are essential for the shooting range.



8407 BLACK POLICE WHISTLE



8300 G.I. STYLE O.D. POLICE WHISTLE, plastic w/lanyard, cork pea



10356 G.I. STYLE POLICE WHISTLE, silver-plated w/lanyard



10366 G.I. STYLE POLICE WHISTLE, nickel-plated w/brass finish, lanyard

STORM ALL WEATHER SAFETY WHISTLE, worlds loudest whistle, works under water, used by the police & fire fighters, Available in: **ORANGE (10359) & BLACK (10358)**

4700 GENUINE G.I. EARPLUGS, 2 per set, noise reduction rating 26 decibels



4800 SMITH & WESSON® SUPPRESSOR EAR MUFF, 25 dB N.N.R., contoured, padded headband, rugged plastic construction, easy slide adjustment, clamshell packaging



4900 SMITH & WESSON RECOIL EAR MUFF, 29 dB N.R.R., padded headband, adjustable sliding ear cups for a comfortable secure fit, perfect for high level noise environments



Smith & Wesson®

4711 SMITH & WESSON CORDED EAR PLUGS W/CASE, reusable, triple flanged design creates 3 barriers of noise blocks, corded to prevent loss, 22 dB N.R.R.



3815 DELUXE GUN CLEANING KIT, cleans .17 to .45 caliber rifles/handguns & .410-12 gauge shotguns, 23 components including brushes, mops, rods, brass accessory adaptors, handles, slotted tips & patches, convenient aluminum carry case, 1 3/4" x 12" x 8"



4915 OTIS TACTICAL GUN CLEANING SYSTEM, cleans every gun from .177 air pistol to .50 cal BMG rifle and all shotguns, premier weapons cleaning system used by the armed forces, FBI, DEA, etc., 23 components including cables, brushes, patches, cleaner and much, much more, lifetime guarantee, U.S. made

GSA
COMPLIANT

Rothco offers a large selection of duty belts & accessories. Our rugged duty gear is lightweight yet functional, easy to carry and easy on the wallet!

ROTHCO POLICE HOLSTERS & DUTY GEAR, black polypropylene web



10570 POLICE DUTY BELT, 2 1/4" wide, quick release Nexus buckle, Sizes: 32"-38", 40"-44", 46"-50"

10541 BATON HOLDER, for standard & side handle batons

10540 LATEX GLOVE POUCH, holds 1 pair, hook & loop closure

10542 MINI-MAGLITE POUCH, vinyl trim, hook & loop closure

10543 STANDARD KEY HOLDER

10572 POLICE DUAL MAGAZINE POUCH, leather type belt loop, horizontal or vertical, holds two 9 mm/.45 mags.

10574 POLICE HANDCUFF CASE, holds standard or link cuffs

10576 POLICE LARGE MACE HOLDER W/FLAP, 5 1/4" x 1 1/4" closed, hook & loop closure

10586 POLICE SMALL MACE HOLDER W/FLAP, 3 3/4" x 1 1/4" closed, hook & loop closure

10582 POLICE SILENT KEY HOLDER, plastic hook, hook & loop holder

10584 POLICE BELT KEEPERS, 4 per card



10677 INNER DUTY BELT W/HOOK & LOOP, 1 1/2" wide, tough polypropylene webbing, hook & loop closure, hook attachment to mate with Deluxe Triple Retention Duty Belt, Sizes: 32"-38", 40"-44", 46"-50"



10675 DELUXE TRIPLE RETENTION DUTY BELT, 2" wide, tough polypropylene webbing, triple retention buckle, inside loop lining to mate w/Inner Duty Belt, Sizes: 32"-38", 40"-44", 46"-50"

ROTHCO ENHANCED PUBLIC SAFETY MOLDED DUTY GEAR, • H.W. 1680 Denier Ballistic Material, High Density Foam Center
• Soft Lining To Protect Gear • Easy One-Hand Use • Fits Duty Belts Up To 2 1/4" Wide Belt Loop



20541 BATON HOLDER, 6 1/4" x 2 1/4", (Baton not included)

20542 AA MINI MAGLITE HOLDER, 6 1/4" x 2", snap closure

20510 UNIVERSAL RADIO POUCH, 8" x 4", snap closure

20584 BELT KEEPERS, 4 per card, snap closure, hook tape for fastening to inner duty belt

20574 HANDCUFF CASE, 5" x 4 1/2", fits standard or link cuffs, snap closure

20582 SILENT KEY HOLDER, 4 3/4" x 2 1/2", w/snap and hook & loop closure

20572 DOUBLE MAG POUCH, 6" x 5", snap closure

20540 LATEX GLOVE POUCH, holds one pr, hook & loop closure

20576 LARGE MACE HOLDER, 5 1/4" x 1 1/4" closed, hook & loop closure

Rothco offers a large selection of holsters & accessories. Our rugged duty gear is lightweight yet functional, perfect for law enforcement & security personnel.



ROTHCO BLACK TACTICAL HOLSTERS, leg strap, quick release belt clip, thumb snap, clip pouch, choose from large frame 4" size (Glock 17) (10550) or large frame 5" size, (Beretta 92) (10552)



10752 DELUXE ADJUSTABLE UNIVERSAL DROP LEG TACTICAL HOLSTER, H.W. polypropylene webbing, dual adjustable leg straps w/quick release buckles, quick release belt clip, hook & loop adjustable thumb snap & clip pouch, adjusts to fit most full frame semi-automatic pistols

NEW!

ROTHCO BLACK UNDERCOVER SHOULDER HOLSTER, 600 denier poly, fully adjustable padded shoulder strap w/snaps, belt strap & sling, hook & loop thumb snap, protective lining, leatherette trim, available in 4" (10564), fits most standard & compact semi-automatics, or 5" (10565), fits most full size semi-automatics



10544 ROTHCO HIP HOLSTER, Adjustable front snap, vinyl lined, fits 4" & 5" autos including Beretta 92, Colt, Glock, etc.



10556 ROTHCO POLICE HOLSTER, hook & loop adjustable thumbsnap, leatherette lining, fits 4" & 5" autos including Beretta 92, Colt Gov't, etc.



40225 BLACK M.O.L.L.E. SHOTGUN/ AIRSOFT AMMO POUCH, PVC coated polyester, M.O.L.L.E. compatible, 25 elastic shell loops, holds airsoft shotgun shells or 12 & 20 gauge shells, 21 3/4" long when open, 8 1/2" x 4" x 1 1/2" closed, folds closed with hoop and loop sides, top flap w/snaps

Also Available in O.D.



NEW!



95 ROTHCO DUTY RADIO POUCH, heavyweight nylon, adjustable hook & loop and elastic closure, belt loop, fits radios up to 8" x 3" x 1 1/2"

4007 BLACK 3-POINT RIFLE SLING, 1 1/4" poly webbing, adjustable universal sling with multiple attachments for easy adaptability, fits most assault rifles



4067 BLACK TACTICAL SINGLE POINT SLING, 1 1/4" nylon webbing, fully adjustable to fit around vest or gear, dual bungee design for added comfort and support, helps reduce bouncing and enhances retention, quick release buckle & metal spring clip for easy removal or attachment of firearm while wearing sling



HEAVY DUTY NYLON RIGGERS BELT, adjustable, metal cargo buckle w/hook & loop closure, Choice of: **TAN, FOLIAGE GREEN** or **BLACK**, Available in: Medium (4598) (31" to 35"), Large (4597) (35" to 39") and X-Large (4697) (39" to 43")

BLACK



ROTHCO

PUBLIC SAFETY & LAW ENFORCEMENT GEAR

Since 1953 Rothco has produced and distributed military and public safety clothing and gear all over the United States and the world. From humble beginnings in a small loft on New York's Lower East side to our current state-of-the-art 155,000 square foot headquarters on Long Island, Milton Somberg along with his son Howard, have guided Rothco with the same sense of quality, integrity, and pride for over 55 years.

Rothco also provides Ultra Service, which means 95% of all orders ship within 24 hours, a 98% in stock rate, deep inventories and easy, fast, 100% accurate online ordering. Our newly updated website at www.Rothco.com has everything you need to do business 24/7 from virtually everywhere.

Just another reason to experience the Rothco difference: Profit generating products and unmatched service.



**elite
uniformes**

la imagen corporativa de tu empresa

WEB

www.eliteuniformes.com

DIRECCIÓN

Ignacio Altamirano Esq. 5 de Mayo Colonia Centro C.P. 23000
La Paz, Baja California Sur, México.

TELÉFONOS

Tel (612) 125-88-31 Tel / Fax: 125-88-30 Cel.(612) 141-75-69

CORREO ELECTRÓNICOS

silverio@eliteuniformes.com / silveriobc@hotmail.com

